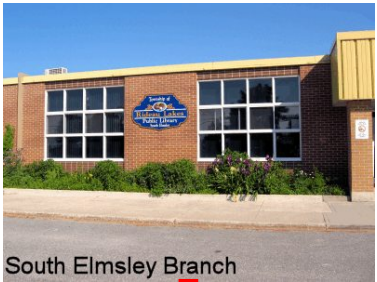




Annual Report - 2011



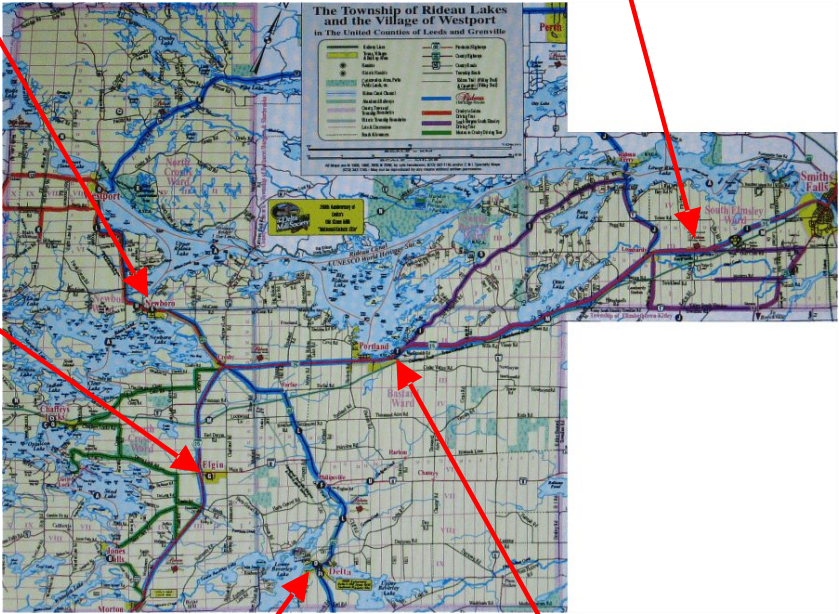
Newboro Branch



South Elmsley Branch



Elgin Branch



Delta Branch



Portland Branch

About Us

The Rideau Lakes Public Library serves a predominately rural population of 10,350 representing 6,919 households. Although close to urban centers such as Brockville, Kingston and Smiths Falls, the Township itself consists of farms, villages, and hamlets including, Chaffeys Locks, Chantry, Crosby, Delta, Elgin, Jones Falls, Lombardy, Morton, Newboro, Phillipsville and Portland. The Township of Rideau Lakes covers 311 square miles and is the largest municipality in the county of Leeds and Grenville with the most scattered population. The rural nature of our township is evident in its rugged landscape and lakes. Rideau Lakes not only straddles the Frontenac Axis of the Canadian Shield, but is also traversed by the Rideau Waterway, a UNESCO World Heritage site. Given



that the Township has 500 km (310 miles) of shoreline, excluding the Rideau Waterway it's population almost doubles during the Summer months due to the influx of cottagers from the Ottawa and Kingston area.

Our public library system has five branches, with the main branch and administrative headquarters located in the village of Elgin. There are branches in Delta, Newboro, Portland and South Elmsley. The

South Elmsley Branch is currently located in the Lombardy Public School and is one of the few remaining "schoolhouse libraries" in Ontario. The Library has a staff of seven permanent part-time workers supplemented by occasional staff. As well, regular volunteers assist us in our many activities. The nine-person Library Board represents each ward in the township as well as the municipal council.

Highlights of 2011

- Trillium grant approval for \$14,700 to improve accessibility in Delta and Newboro
- New partnership with Early Years Program delivery at Elgin branch
- Partnership with Country Roads Community Health Center to deliver homework clubs
- Preliminary audit for library accreditation at 5 branches
- Launch of pilot "Reading Recovery" program at South Elmsley
- Growth of our book clubs to 13
- Purchase of 5 e-readers and an Ipad as well as workshops in new technologies
- Summer Internet Cafe at main branch
- Continuation of shared IT position due to provincial grant
- Redesign of website (in progress)
- Digitization of local history materials (continuing)
- Partner in "Read to Every Kid Every Day" project which won the Minister's Award for Innovation in Small Libraries

- Nearly 50% of township residents have library cards

Some Statistics

- 67,626 checkouts at Rideau Lakes Public Library (38% increase from 2007)
- 4,805 registered library card holders
- 39,396 items available for checkout
- 42,450 visits to the library
- 3,010 people attended our programs use of materials
- 18,236 electronic visits
- 5,649 people used our public computers and wireless services

What does it mean

- At the average cost of \$25 per library item—library patrons checked out the equivalent of \$1,690,650 worth of items
- Each patron would have checked out 14 library items this past year!
- Attendance is over 4 times the total population for Rideau Lakes
- Internet and wireless use is 73% higher than in 2007
- It means our library is very busy. We are the public face of our township.

Partnerships

Partnerships are important to our operation. Our partners include:-

- Leeds and the 1000 Islands Public Library

- North Grenville Public Library
- Country Roads Community Health Center
- Upper Canada Board of Education
- Local Hall Boards
- Rideau Lakes Heritage Societies
- Ontario Early Years
- Township of Rideau Lakes Recreation Department and Municipal Heritage Advisory Committee
- Community and Primary Health Care



Adult Programs

- Outreach to seniors in Lombard Manor, Rideau Lakes Apartments and Mill Bay Court
- Outreach to shut-ins
- Outreach to CPHC Diner's Clubs in three locations
- Computer, Internet and e-book training
- 13 book clubs with sets
- Craft groups such as paper making

Children's Programs

Studies show that children who read succeed. Some of our programs include:-

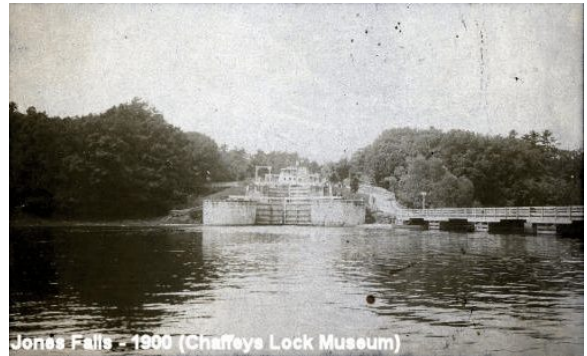
- The Ontario Library Association Forest of Trees Reading Programs were participated in by students at South Crosby, Lombardy and Rideau Centennial Public Schools
- Toronto Dominion Summer Program "Splash!" was presented at our libraries and local day camp

- Partnered with Early Years to deliver a preschool program at the main branch each Friday
- Participated in Homework Clubs through a shared grant with Country Roads called "Move It!" Featured toddler programs and themed juvenile programs in Elgin, South Elmsley and Portland.
- Regular class visits in two public schools as well as outreach to the high school.

Lakes and Islands Times Past

The Lakes and Islands Times Past is an exciting joint digitization initiative supported by the Public Library Boards of [Rideau Lakes](#) and [Leeds and the Thousand Islands](#) thanks to a special grant from the Ministry of Tourism, Culture and Sport. In cooperation with six local heritage groups, we have preserved and shared photographs, postcards, diaries, letters, and other records through [OurOntario](#).

By the end of 2011, we had 1,394 various images online. Consult our website at www.lakesandislands.ca for more information.



Comments from our patrons

"Our librarians are fantastic ...helpful, enthusiastic, knowledgeable!" South Elmsley resident

"The library here has great books and great people. Awesome!"
Newboro resident

"I love this library! It rocks!" A young library user

Library Staff

Sue Warren, CEO
Donna Penney, Head of
Technical Services
Joan Cochrane, Head of
Circulation
Vicki Stevenson, Children's
Programmer and Circulation
Christine Row, Adult
Programmer and Circulation
Matt Jewett, Information
Technologist
Liz Priebe
Elva McCann
Jamie Gipson

Board of Directors

Doug Franks, Chair (South Elmsley
Ward)
Yvonne Helwig, Vice-Chair (Newboro
Ward)
Greg Smith, Treasurer (Bastard/South
Burgess Ward)
Bob Lavoie, Council Representative
Sue Warren, CEO/Secretary
Nancy Sheffield (Bastard/South Burgess
Ward)
Julian Hawryszko (South Crosby Ward)
Peggy Fletcher (South Elmsley Ward)
Sheilagh Dubois (South Crosby Ward)
Joanne McIlhinney (North Crosby Ward)

Contact Information

Rideau Lakes Public Library Elgin Branch 613-359-5315
Portland Branch 613-272-2832
Delta Branch 613-928-2991
Newboro Branch 613-272-0241
South Elmsley Branch 613-284-9827
Headquarters 613-359-5334
On the Web: <http://www.rideaulakeslibrary.ca>